

## Is Your Network Healthy? Find Out Today with Sentinel Network™

Do you know the state of health of your network? If your company is like most, you probably wait until a problem occurs before taking action. By then it may be too late. Fortunately, there is a solution: **Sentinel Network** can provide you with a simple and clean user interface to visualize the health of the network. Sentinel Network is a web-based application that combines network monitoring and prognostic health management (PHM) technologies. The main feature of Sentinel Network is its ability to predict the remaining useful life of network assets, such as power supplies. This prognostic capability reduces network downtime by supporting condition-based maintenance (CBM) of critical assets prior to catastrophic failure. Sentinel Network retrieves information from network assets, analyzes and displays the predicted remaining useful life (RUL) in real time, thus supporting risk management procedures. A sample of the user interface is shown in Figure 1.

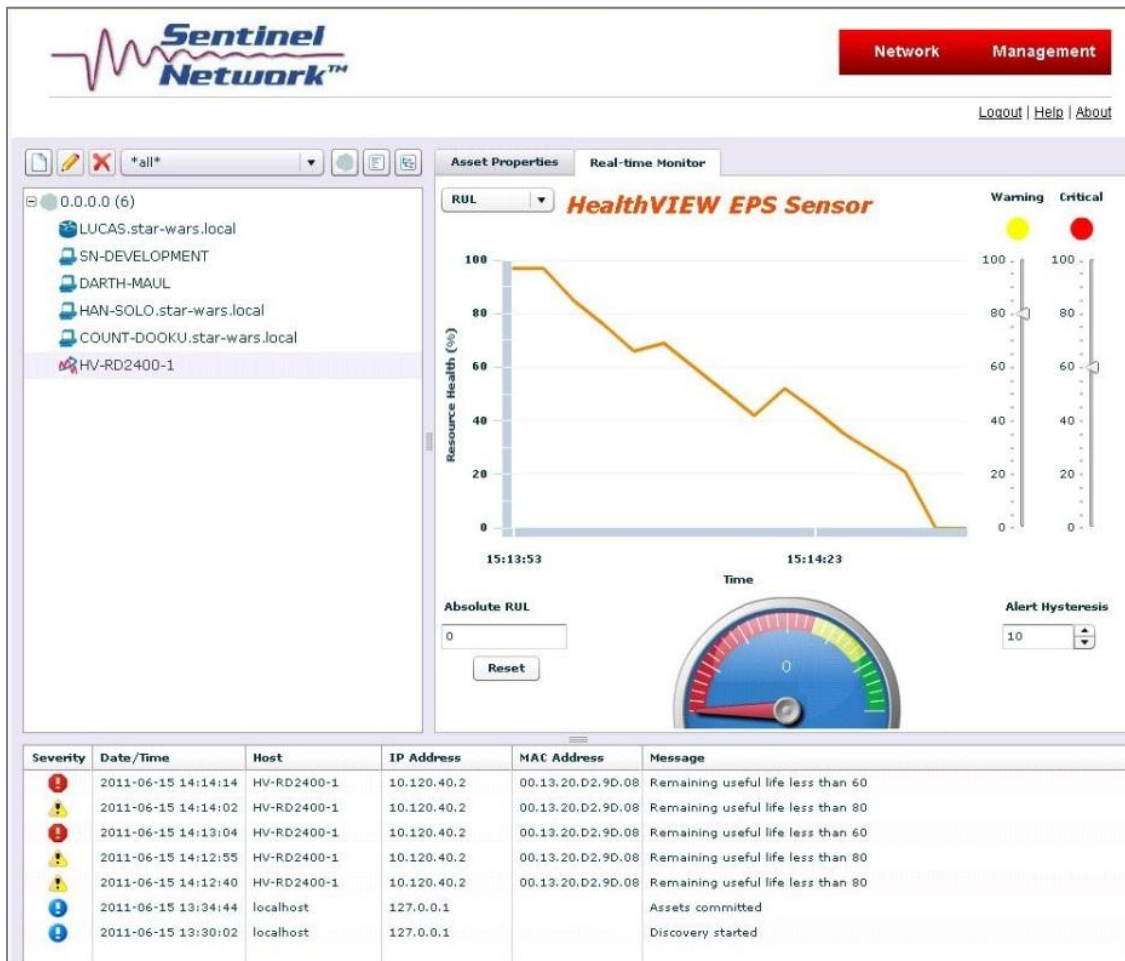


Figure 1: Sentinel Network graphical user interface

Sentinel Network's monitoring technology includes network discovery, IT asset inventory, and device health real-time monitoring. A Simple Network Management Protocol (SNMP) agent is used to retrieve Windows Management Instrumentation (WMI) data from IT devices. A built-in troubleshooter will resolve unauthorized changes to the switch configuration such as Virtual Local Area Network (VLAN) addition/removal, VLAN port assignment, SNMP, quality of service (QOS), static routing, interface status and name, spanning tree protocol (STP), and any other supported switch features. Sentinel Network discovers and monitors up to 64,000 devices and generates three types of alerts, which are sent via email to notify network administrators about events in the network. Sentinel Network comes in a rack-mounted server appliance (Figure 2). Moreover, the software is pre-installed, reducing the cost of configuration and implementation. The device is plugged into the network to initialize the discovery of the network assets.



Figure 2: Sentinel Network rack-mounted unit

Sentinel Network incorporates electronic prognostics capabilities into the network monitoring system. Current network monitoring systems are based on alerting the user to events that are happening or have already happened, while Sentinel Network ***predicts a failure before it becomes a critical event***. Most tools on the market use data-trending prediction based on historical data, while Sentinel Network uses reasoners that analyze and predict failure in real time based on the physics of failure (PoF). This helps you be proactive rather than reactive when managing your network. Sentinel Network will change the way network monitoring systems are perceived, and become a strong competitor in the IT network monitoring market.

Contact us today to find out how Sentinel Network can help you keep your network healthy by calling +1 520-742-3300 or by email at [info@ridgetopgroup.com](mailto:info@ridgetopgroup.com).